



GEORGIA DEPARTMENT
OF COMMUNITY HEALTH

SOURCE Train the Trainer: Discharge Planning



Presentation to: Pruitt Home 1st SOURCE CMS Fall 2014

Presented by: Lorrie Stewart RN NP

Karen Fersh, RN BHA



Mission

The Georgia Department of Community Health

We will provide Georgians with access to affordable, quality health care through effective planning, purchasing and oversight.

We are dedicated to A Healthy Georgia.



GEORGIA DEPARTMENT
OF COMMUNITY HEALTH

Adjunct to Case Managers: The Heart of SOURCE



Presentation to: SOURCE CM and CMS Spring 2014

Presented by: Lorrie Stewart RN NP

Stephanie Dixon RN BSN, MS

Train the Trainer: Involuntary Discharge, what now?

At the end of this training you should be able to take back to your staff the answer to these questions:

- The member has been found to not meet eligibility requirements (by DCH or your agency), what now?
- How can I help the member and maintain partnership with DCH
- How does the hearing process work around discharges?

Train the Trainer: Involuntary Discharge, what now?

- How does NOW/COMP work for the member
- What is Family Support Services from DBHDD, and how do we get it for the member?
- What about children? Who can I contact?
- Is there a state database? Who is DAS?
- Where can I go for more info on this training?
- Where is the resource excel file DCH asks about for discharge information?

Train the Trainer: Involuntary Discharge, what now? Bonus for Case management

- We have a flu shot and other necessary immunization assurance in policy, is there an easy way to accomplish this?
- Who will be our vaccine champion?

Per Waiver Requirements

Under Methods for Remediation/Fixing Individual problems...

b. Methods for Remediation/Fixing Individual Problems

- i. Describe the State's method for addressing individual problems as they are discovered. Include information regarding responsible parties and GENERAL methods for problem correction. In addition, provide information on the methods used by the State to document these items.

As

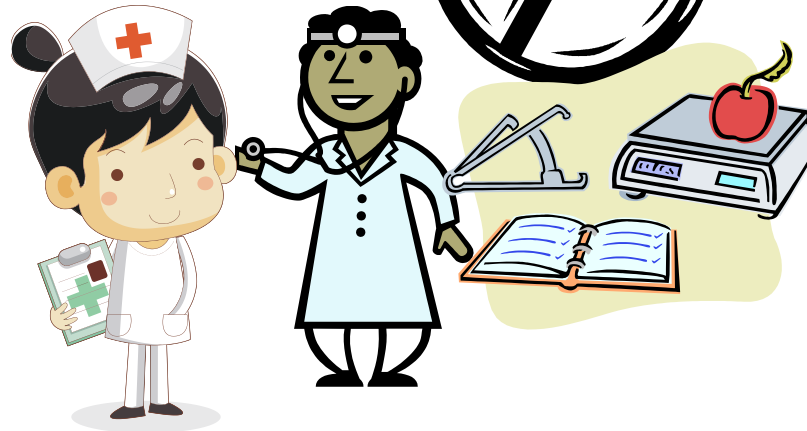
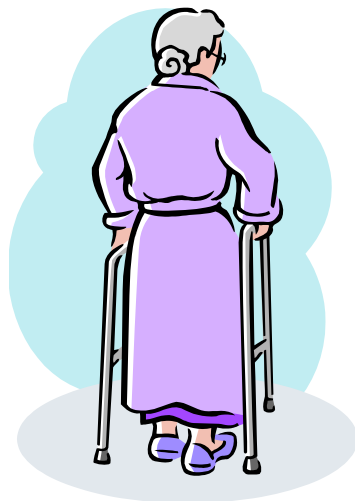
individual problems are discovered or if data analysis indicates that there is a need for remediation, the problems are remediated directly with the Operating Agency that assures level of care determination. Any waiver participant found to not meet level of care is provided with written notice and advised of his right to a hearing along with legal resources and a description of the process. Further, discharge planning

Discharge planning is required of all Case management entities to assure, to the extent possible, that other options for service if needed have been explored and offered. this process is also followed if the Medicaid agency finds, through its PI unit or Program specialists that a waiver participant fails to meet LOC requirements



Case Manager Connects

- Member's needs with the community



Train the Trainer: Involuntary Discharge, what now? NOW/COMP

- A recording of Catherine Ivy giving us an insiders view of NOW/COMP and how to use their language to navigate the system and interpret it for our members who are eligivle for this state service.

Children's Resources in GA come thru Public Health Services: Susan McCallum

- Resources in Children's Medical Services can help your parents with children from 0-21 years with resources in the community.
- Help family coordinate physician services
- http://dph.georgia.gov/sites/dph.georgia.gov/files/MCH/CMS/ChildrenMedServices_070814.pdf
- <http://dph.georgia.gov/CMS>

Train the Trainer: Involuntary Discharge, what now? Georgia's Resource Connection

- Nancy Dubas will speak to a database that was developed for the state.
- Some resources are only for 60 and older
- Some will apply to anyone
- You can use these resources at anytime, but will be especially helpful with discharge planning



Train the Trainer: Involuntary Discharge, what now? DCH Excel file

- How to give an *individualized* discharge plan that will be approved by DCH
- How to use the excel file
- What we expect to see

Thank YOU

- Questions?
- Lstewart@dch.ga.gov
- Kfersh@dch.ga.gov

